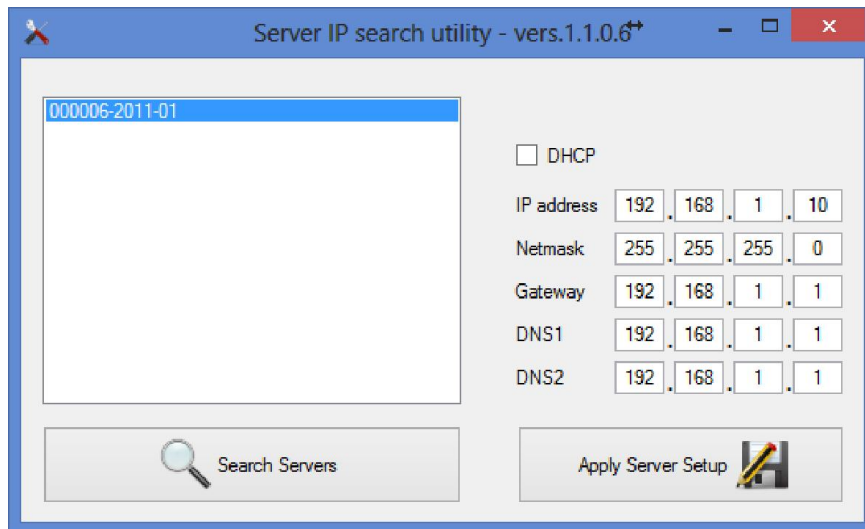


Servers manager



The application program Server manager is installed together with the configurator tool. It searches the network for connected servers and shows the actual IP configuration of each device. After selecting the correct device it is possible to change the IP settings (default configuration is DHCP) and save them pressing the button "Apply Server Setup". It is highly recommended to turn off DHCP and use a static IP address in order to avoid future connection problems.